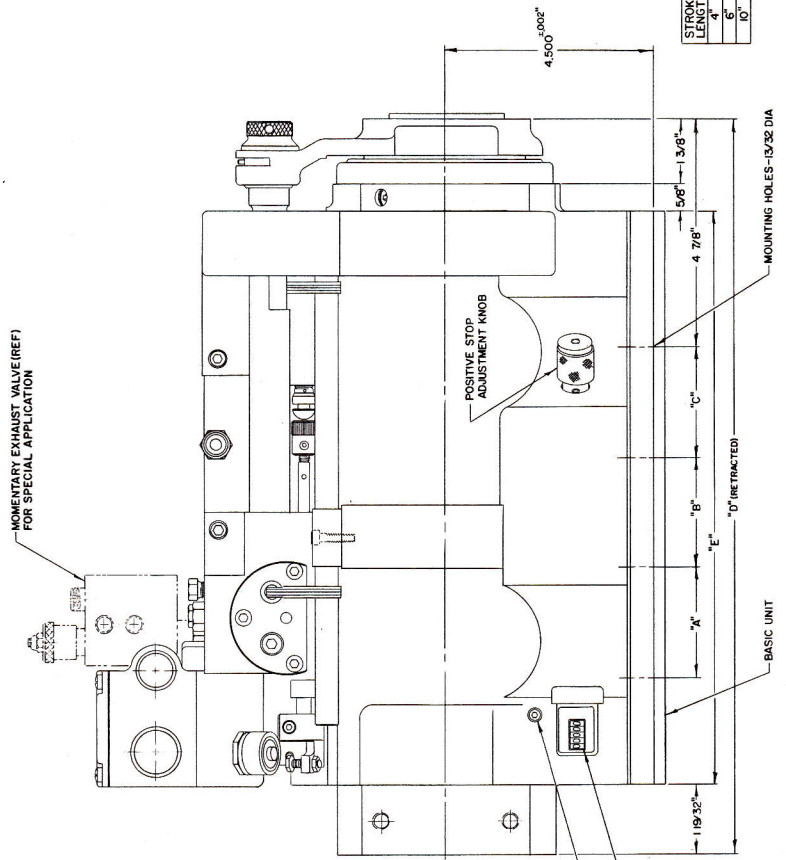
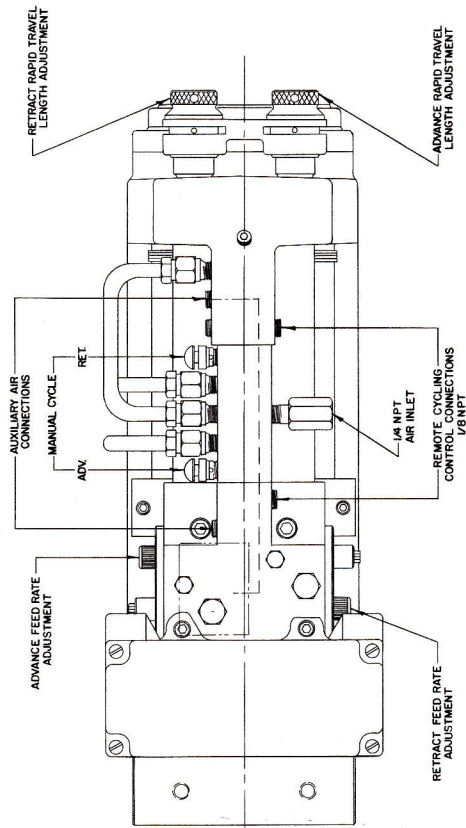
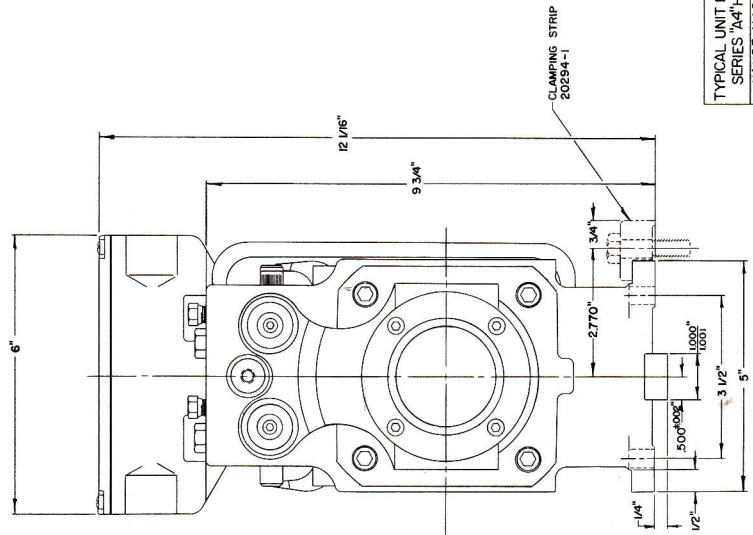


TYPICAL ASSEMBLY  
1/2 SIZE



STROKE LENGTH	"A"	"B"	"C"	"D"	"E"
6"	6.7/32"	6.7/32"	6.7/32"	6.7/32"	6.7/32"
8"	8.7/32"	8.7/32"	8.7/32"	8.7/32"	8.7/32"
10"	10.7/32"	10.7/32"	10.7/32"	10.7/32"	10.7/32"

TYPICAL UNIT INSTALLATION  
SERIES "A4" HOLOMATIC  
HAUSE MACHINES, INC.  
MONTPELIER, OHIO  
PH 4-38-69  
2175-01 No. 21795-01